

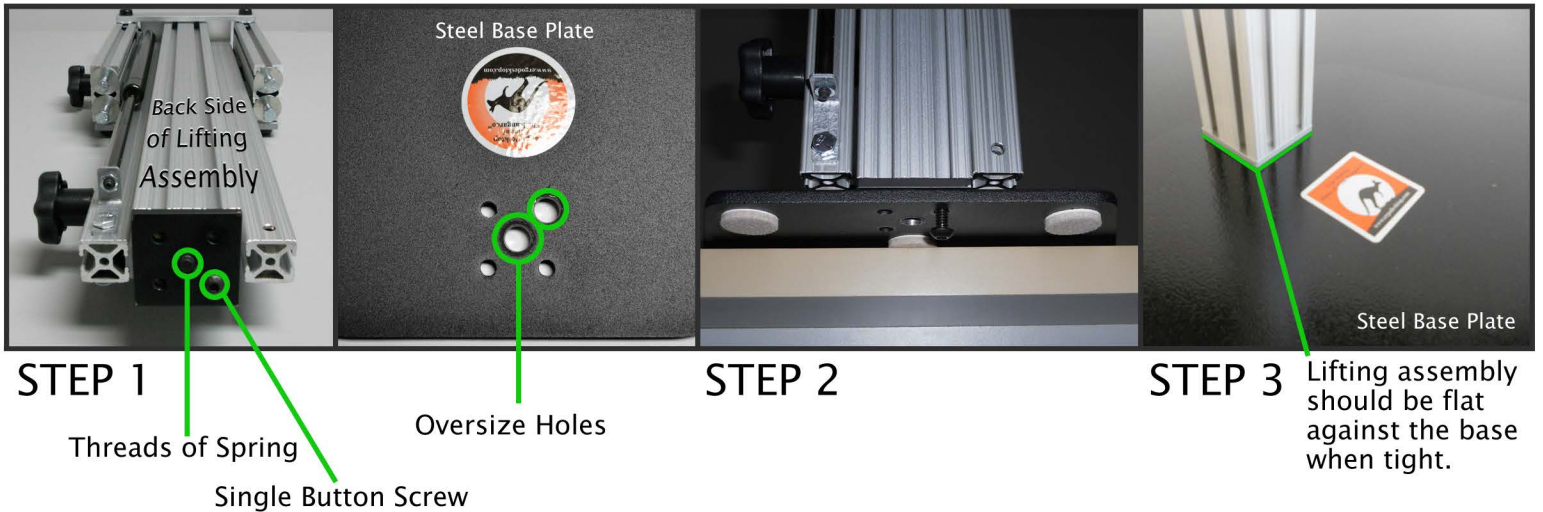
# THE KANGAROO JUNIOR – ASSEMBLY INSTRUCTIONS

## ASSEMBLY PARTS LIST

- A. (6) Black Screw Covers
- B. (2) 1/4-20 x 2.50 Hex Head Bolts
- C. (1) 5/32 Allen Wrench
- D. (2) Fender Washers
- E. (2) Acorn Nuts
- F. (3) 1/4-20 x 7/8 BHCS
- G. (2) Thick Black Washers
- H. (1) 7/16 Wrench
- I. (2) Locking Star Washers



Unit is shipped with 4 bolts and washers in the monitor lifting assembly



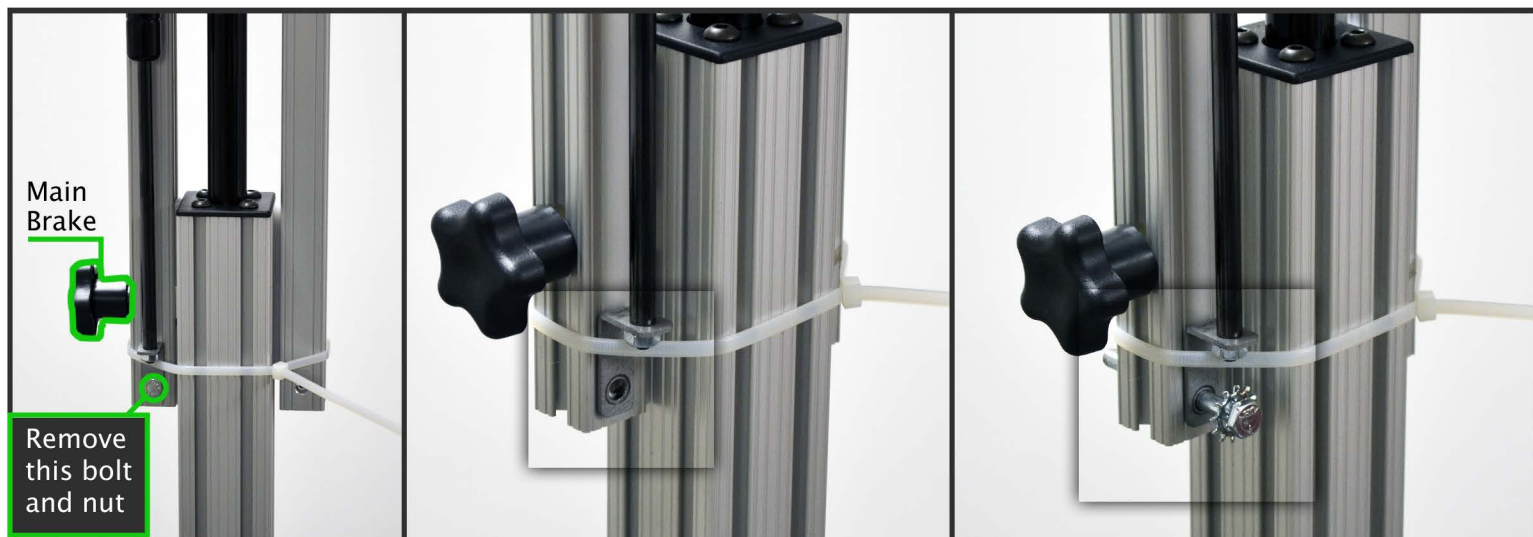
Step 1: Lay the Lifting Assembly on a solid surface with the back side up as shown. Notice the single Button Head Bolt and the threads of the spring in the assembly union. **DO NOT LOOSEN THE SINGLE BUTTON HEAD BOLT.**

Now notice the (2) oversized holes in the base plate. The Single Button Head Screw and the Threads of the Spring will go into these oversized holes.

Step 2: With the Base Plate over hanging the table about 2 inches, hold the Lifting Assembly above the Base Plate and align the Single Button Bolt and the Spring Threads into the oversized holes.

Step 3: Insert and thread the (3) 1/4-20 x 7/8 BHCS through the Base Plate and into the Lifting Assembly. Once all (3) bolts are threaded in, tighten securely with the 5/32 allen wrench. Lifting Assembly should be flat against the Base.

# THE KANGAROO JUNIOR – ASSEMBLY INSTRUCTIONS



## STEP 4,5,6

## STEP 7

## STEP 8

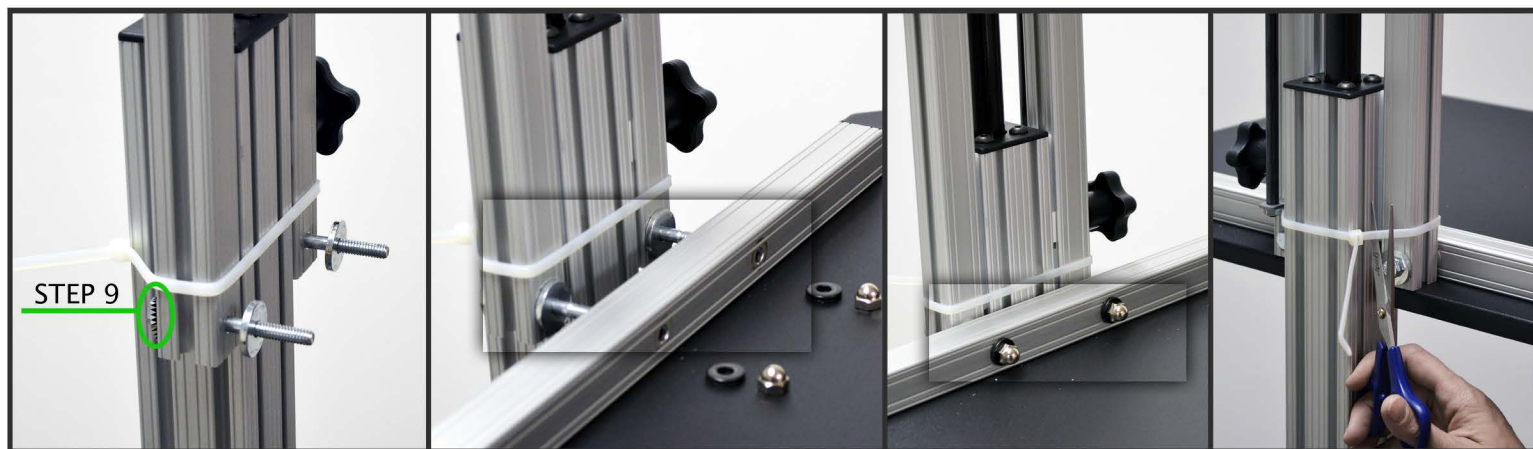
Step 4: Loosen the main brake and the monitor brake and allow the lifting assemblies to extend completely.

Step 5: Re-tighten both brakes.

Step 6: Remove the single bolt and nut that holds the upper spring bracket in place.

Step 7: After removing the bolt and nut in step 6 it should look like this.

Step 8: Put 1 Locking Star Washer on one of the 1/4-20 x 2.5 Hex Head screws. Then slide the Hex Head screw through the spring bracket and vertical rail as shown.



## STEP 10

## STEP 11

## STEP 12

## STEP 13

Step 9: Put 1 Locking Star Washer on the other 1/4-20 x 2.50 Hex Head Bolt and push it through the vertical rail so the threads show on the front of the lifting assembly.

Step 10: Put 1 fender washer on each of the 1/4-20 x 2.50 Hex Head Bolts.

Step 11: Lift the Main Work Surface and guide the bolts through the holes in the horizontal rail.

Step 12: Put on Thick Black Washers and Acorn Nuts. Tighten with the 7/16 wrench.

Step 13: Cut the zip tie holding the vertical assembly together.

# THE KANGAROO JUNIOR – ASSEMBLY INSTRUCTIONS

## STEP 14

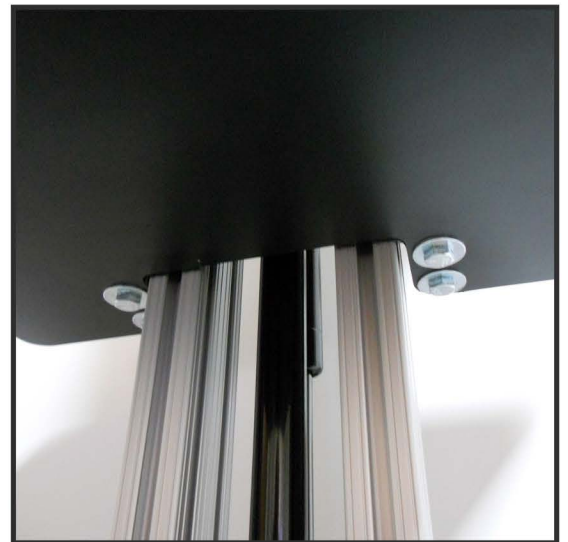
Step 14: Remove the (4) 1/4-20 x 1.0 hex head bolts and (4) washers from the bottom of the Monitor Lifting Assembly.



## STEP 15, 16

Step 15: Position the Monitor Shelf below the lifting assembly and align the holes in the Monitor Shelf with the threaded holes in the Monitor Lifting Assembly.

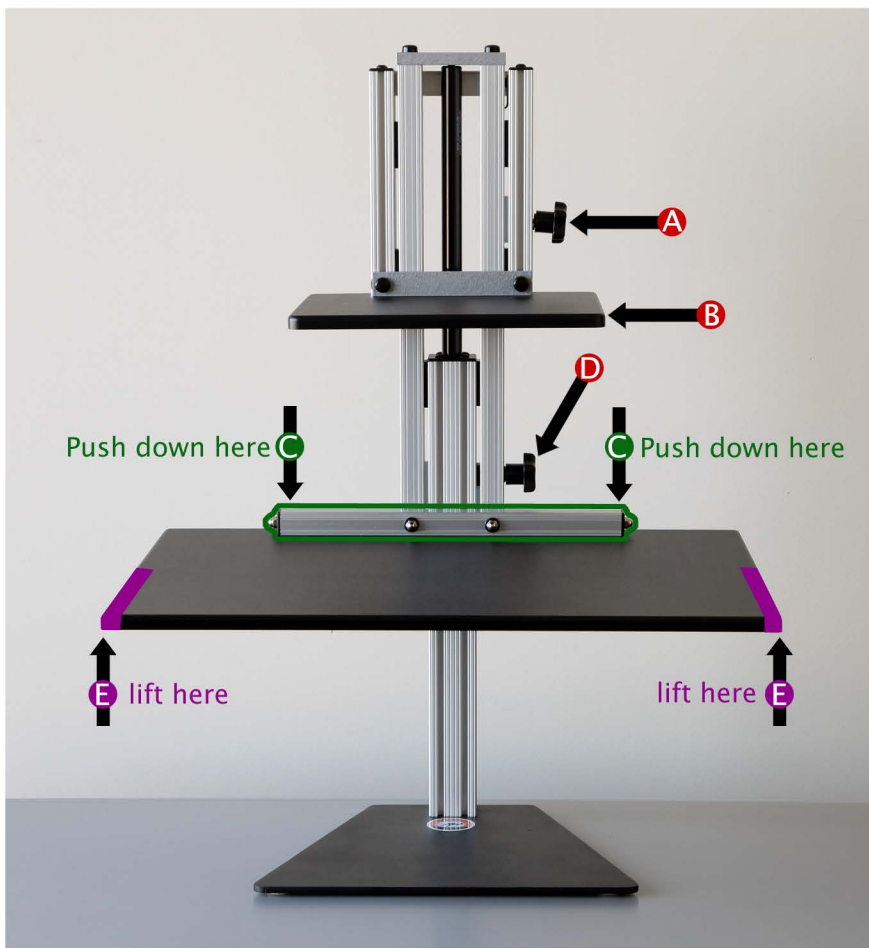
Step 16: Thread the (4) hex head bolts into the threaded holes in the Monitor Lifting Assembly to secure the Monitor shelf to the unit. Tighten securely with a 7/16 wrench.



## HOW TO USE THE JUNIOR

To raise the Junior, loosen the main brake(D) and lift the main work surface on the sides(E & E). After reaching the desired height, tighten the work surface brake. Loosen the monitor brake(A) and raise the monitor shelf(B) with one hand. After reaching the desired height tighten the monitor brake. Place the stabilization leg included with your unit, between the work surface and steel base plate.

To lower the Junior, remove the stabilization leg, loosen the main brake(D) and lean into the unit using your upper body weight pushing down with both hands on the horizontal bar at the rear of the main horizontal work surface (C & C). After the Work Surface is lowered, tighten the work surface brake(D) and loosen the monitor brake(A). Lower the monitor shelf to the desired height then tighten the monitor brake.



- A. Monitor Brake
- B. Monitor Shelf
- C. Work Surface Rail
- D. Main Brake
- E. Main Work Surface



optimal location for support leg

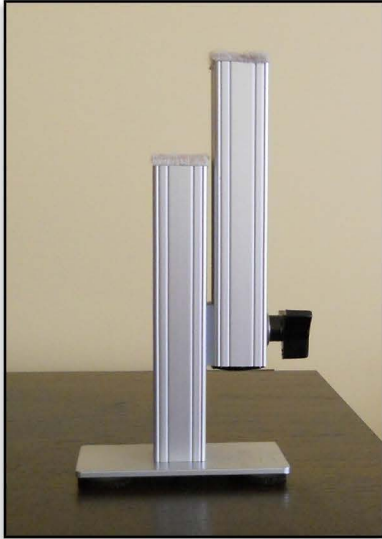
## HOW TO ADJUST YOUR JUNIOR TO SUPPORT LAPTOP OR MONITOR

If you have selected the Monitor/Laptop selection when ordering your Kangaroo Junior, the Junior's monitor shelf will be preset at the Monitor height, please follow the instructions below to change the monitor shelf to support a laptop.

1. Bring the unit into the standing position.
2. Tighten the monitor brake(A), and remove the monitor from the shelf.
3. Go to the back of the unit and loosen the bolt attached to the top of the monitor spring by just 1/2 a turn.
4. Loosen the monitor brake and lift the monitor shelf to the desired height.
5. Tighten the monitor brake, then tighten the bolt attached to the monitor spring.



# THE STABILIZATION LEG



Your adjustable height desk unit comes with an adjustable leg that can be used to give you maximum stability when you are using “The Kangaroo” in the standing position.

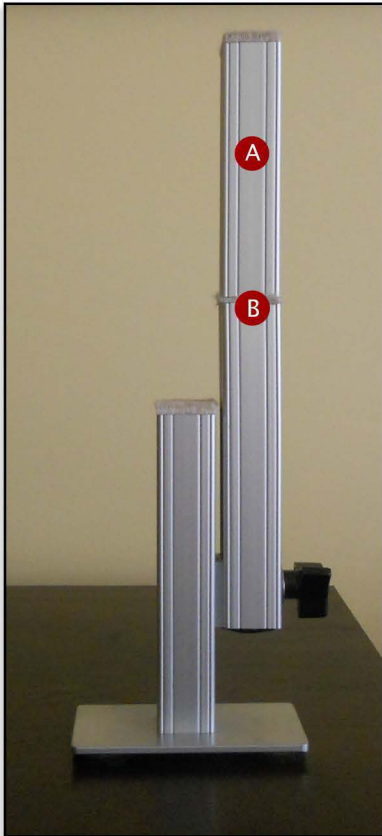
Raise The Kangaroo work surface to your desired standing height and tighten the work surface brake.

Place the adjustable leg under the work surface and loosen the adjustable leg brake. Only loosen the brake by a turn or two, to much and the brake will disengage from the slot.

Extend the adjustable leg until it engages the bottom of the work surface and then tighten the adjustable leg brake.

The leg is shipped with the **extension section** installed to give you additional height adjustment. If this is too tall for your application, simply **unscrew the extension section**.

- A** Extension Selection
- B** screws into here



**ALWAYS REMOVE LEG BRACE BEFORE LOWERING THE WORK SURFACE.**



*Stabilization leg shown without the Extension Selection*

