

THE WALLABY JUNIOR

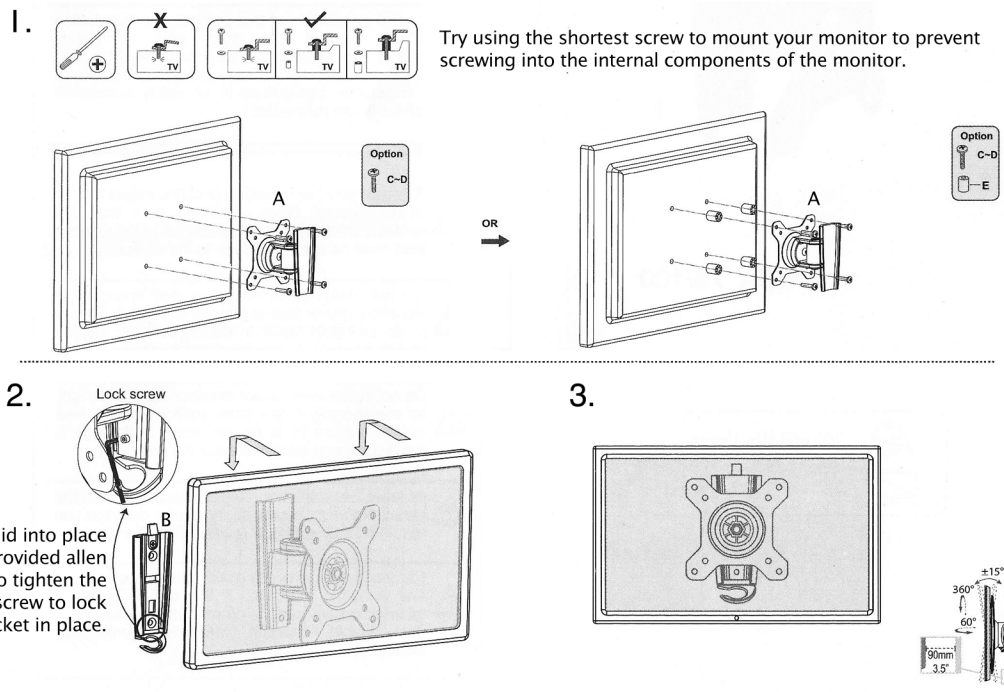
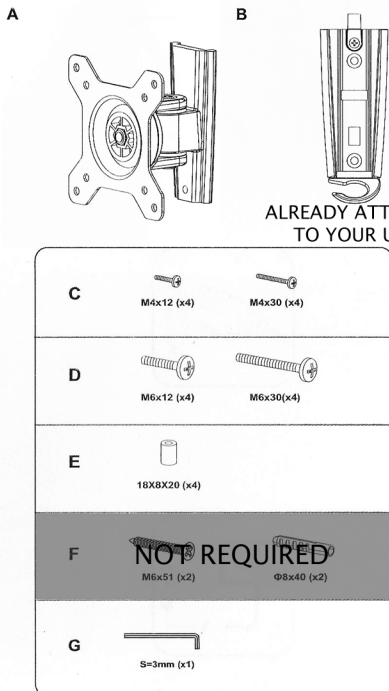
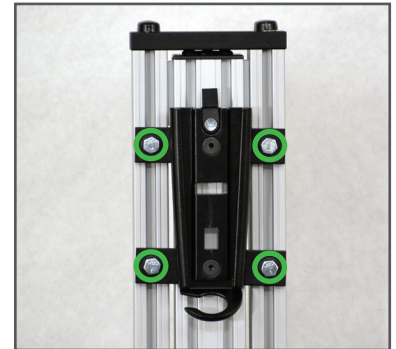


The Wallaby Junior is designed to hold your monitor mounted in a fixed position, and will travel up and down with your keyboard and mouse on the work surface. Your Wallaby Junior is shipped in the down position with work surface brake tightened. The mount may need adjusted to your desired height for both the seated and standing position.

The Wallaby Junior has (1) spring that assists in raising your unit to the standing position and works best when your monitor and keyboard are in place. This reduces the amount of pressure needed to lower the unit.

Always push down with both hands on the horizontal rear rail when lowering the work surface.

Mounting and Adjusting your Monitor height - Follow the instructions below to mount your monitor. Then place your monitor on the unit without tightening the set screw mentioned in step 2. *Is the monitor height right for you in the seated and standing position?* If not, remove the monitor by sliding part A out of part B (mentioned below), and adjust the height of part B by loosening each of the notated four bolts **BY ONLY HALF A TURN**, with the provided 7/16 wrench{H}. Adjust to your height and tighten the 4 bolts securely. Use 4 black caps to cover the exposed bolts once completed.





HOW TO USE THE WALLABY JUNIOR

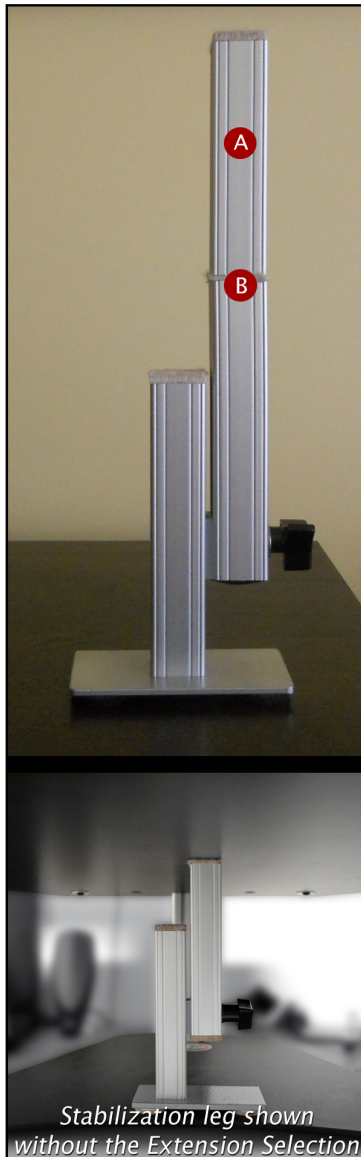
To raise the Wallaby Junior, loosen the main brake(A) and lift the main work surface on the sides(C & C).

To lower the Wallaby Junior, loosen the main brake(A) and lean into the unit using your upper body weight pushing down with both hands on the horizontal bar at the rear of the main horizontal work surface (B & B).

A. Main Brake

B. Work Surface Rail

C. Main Work Surface



THE STABILIZATION LEG

Your adjustable height desk top unit comes with an adjustable leg that can be used to give you maximum stability when you are using "The Kangaroo" in the standing position.

Raise the Kangaroo work surface to your desired standing height and tighten the work surface brake.

Place the adjustable leg under the work surface and loosen the adjustable leg brake. Only loosen the brake by a turn or two, too much and the brake will disengage from the slot.

Extend the adjustable leg until it engages the bottom of the work surface and then tighten the adjustable leg brake.

The leg is shipped with the extension section installed to give you additional height adjustment. If this is too tall for your application, simply unscrew the extension selection.

A Extension selection

B Screws into here

ALWAYS REMEMBER TO REMOVE THE STABILIZATION LEG BEFORE LOWERING YOUR WORK SURFACE